

Sheet List	
Sheet Number	Sheet Name
.L00	COVER & SITE
.L01	FLOOR PLANS
A00	ELEVATIONS & 3D's
C00	E2 GUIDANCE DETAILS
C01	DETAILS - CORRUGATE 1
C02	DETAILS - CORRUGATE 2
C03	DETAILS - CORRUGATE 3
C04	DETAILS - CORRUGATE 4
C05	DETAILS - CORRUGATE 5
C06	DETAILS - CORRUGATE 6
C07	DETAILS - CORRUGATE 7
C08	DETAILS - CORRUGATE 8
C09	DETAILS - CORRUGATE 9

SITE DESIGN:
 EQ: ZONE 3
 WIND ZONE: HIGH
 CORROSION ZONE: C

EXISTING BUILDINGS:
 2 Storey (with 3rd in part) existing dwelling built 1993.
 Timber pile subfloor, timber frame walls, light weight metal roof. Light weight cladding fibre cement sheet direct fixed with render finish over.

SCOPE:
 Remove existing cladding and replace with new vertical corrugate cladding over underlay.

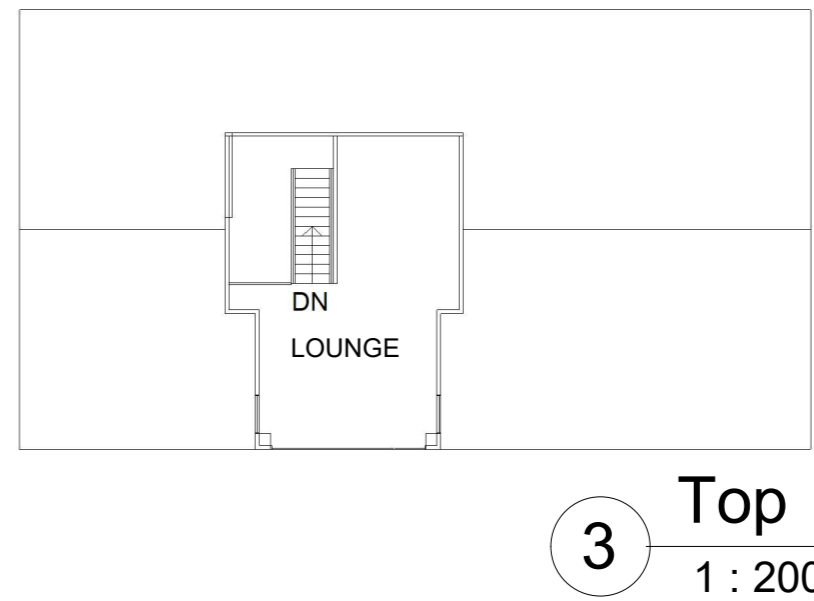
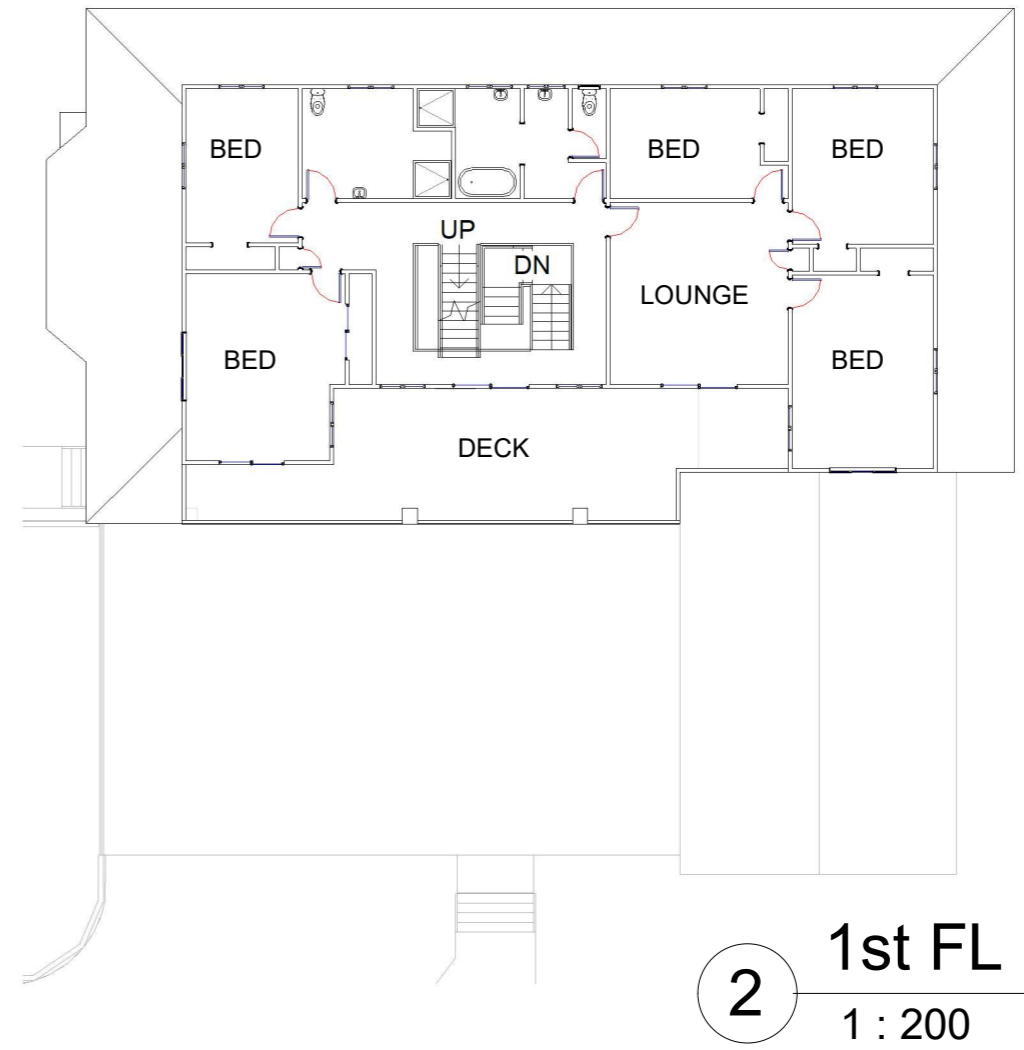
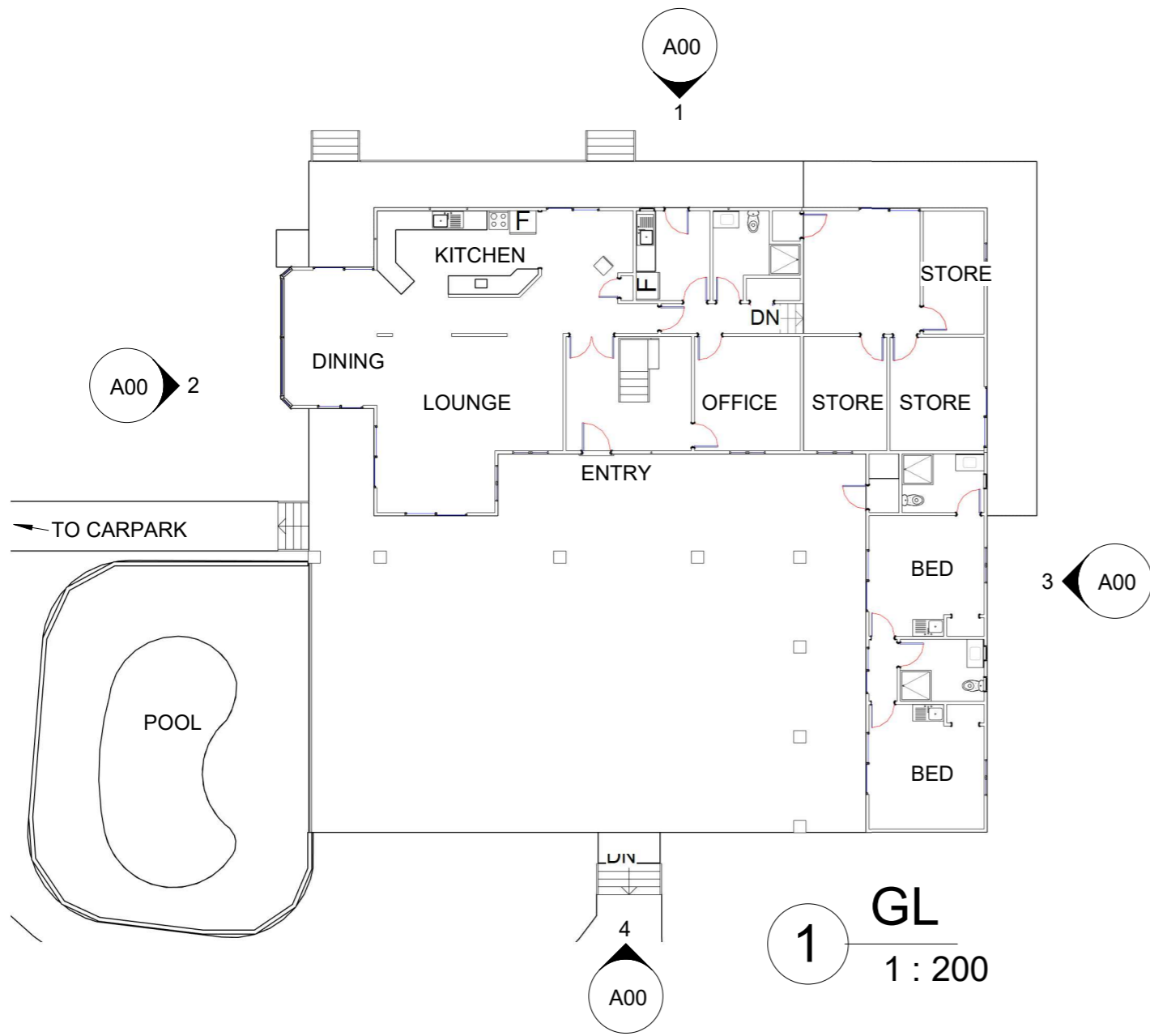
NOTE: Contractor to confirm cost estimate for this work prior to start.

- CONTRACTOR TO:**
- Confirm all dimensions on site prior to construction. Any discrepancies should be brought to the designers attention for review.
 - Read and understand all drawings and specifications to ensure quality of build and end compliance. Approved plans must be followed.
 - Locate all service connections points if any on site prior to commencement of works.
 - Confirm plumbing route and fixture positions on site prior to commencement of works.
 - Locate all electrical and water services on site if any.
 - Confirm on site all boundary bearings, lengths & peg locations on site prior to commencement of works, to ensure position is correct.

CONSTRUCTION NOTES:
 Before building work is done on site, all rubbish, noxious matter and organic matter shall be removed from the area to be covered by the building. Ensure final building platform & finished ground have an even fall away from building to ensure water not be allowed to accumulate in buildings subfloor.

- SEDIMENT CONTROL:**
- All ground cover vegetation outside the immediate building area to be preserved during the building phase
 - All erosion and sediment control measures if any are to be installed prior to commencement of any earthworks

- COMPLIANCE: F5:**
- Public access to site is strictly prohibited. All appropriate signage and fencing/hoardings shall be put in place to ensure unauthorised access does not occur. If required:
 - Sign in procedure to be established under health and safety controls for the site.
 - Appropriate hazard board to be located at site entry stating hazard, location, controls in place and any other necessary information to ensure visitors to site are made aware of any dangers.
 - Contractors to take due care and practice safe working procedures in accordance with relevant standards and health and safety.
 - Materials delivered to site to cause the least nuisance to neighbors and traffic.
 - All rubbish to be disposed of legally off site.

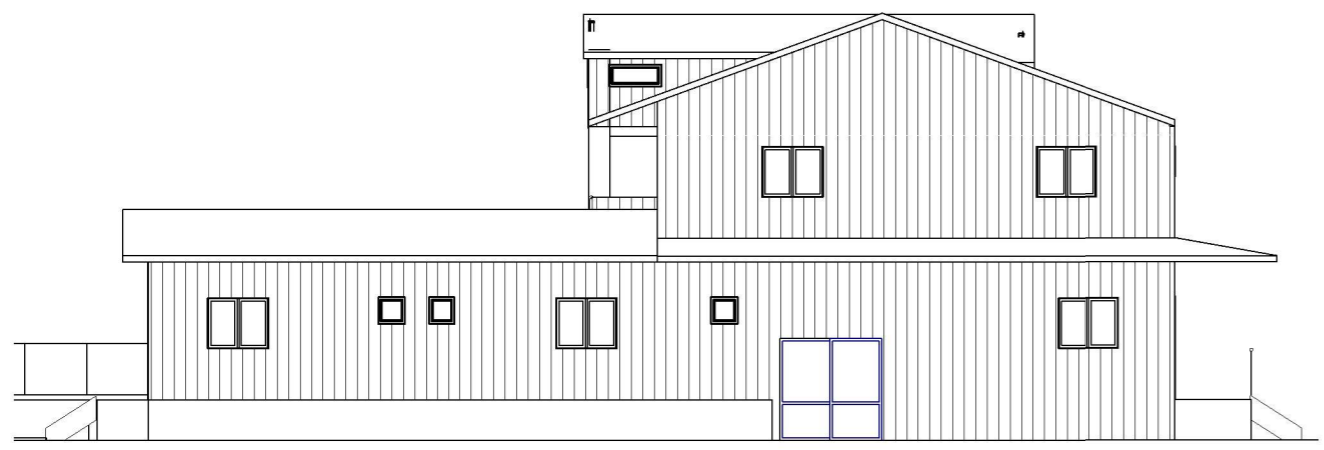




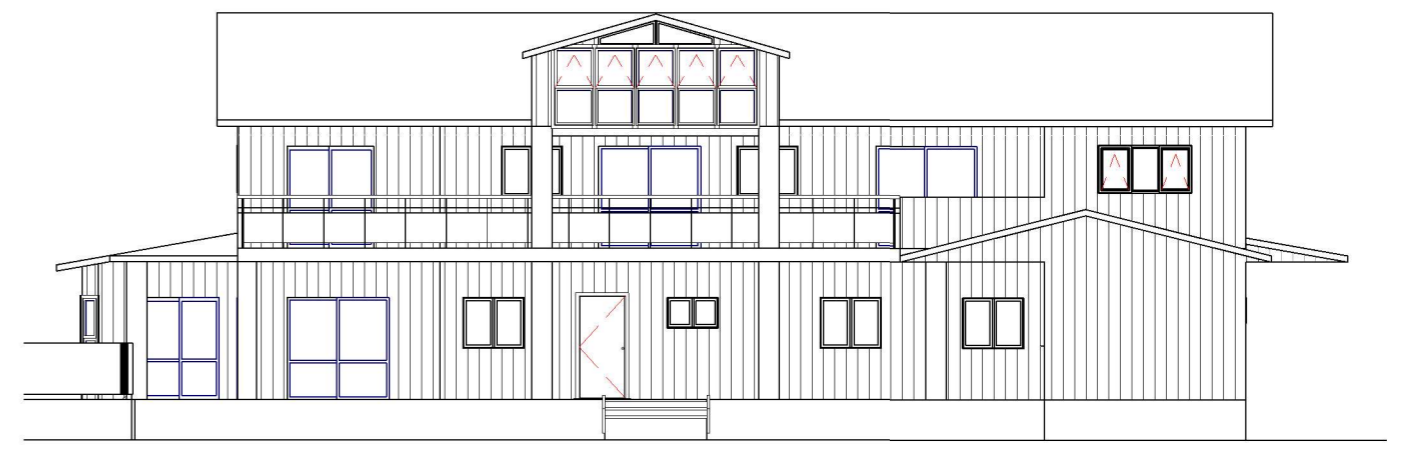
1 Elevation 1 - a
1 : 150



2 Elevation 2 - a
1 : 150



3 Elevation 3 - a
1 : 150



4 Elevation 4 - a
1 : 150

Process for treatment / replacement of wall framing requiring remediation.
 1. Identify any rotted timbers once cladding is removed. This is first done visually and then by prodding the suspect timbers with a solid object to identify extent of rot.
 2. Remove rotted framing by cutting any fixings holding rotted members in place and replacing with like for like timber members. Fixings to match existing. Ensure adequate temporary supports are in place if required.
 3. Close in as described in new cladding documentation.

Note any internal linings requiring replacement must be done like for like.

Risk Matrix					
Wall Type: Standard					
Risk Factor	Low	Med.	High	Very High	Score
Wind (NZS3604)	0	0	1	2	1
Storeys	0	1	2	4	4
R/W Intersection	0	1	3	5	5
Eaves Width	0	1	2	5	5
Complexity	0	1	3	6	1
Deck Design	0	2	4	6	2
Total Risk Score: high					18

Risk Matrix created by Design Navigator

Extg cladding: Direct fixed fibre cement sheet with tectured plaster finish

New cladding: Vertical corrugate direct fixed over new underlay

Pipe penetrations to be sealed with appropriate sized "tradesal" system. See manufacturers dwgs for details.

AS PER TABLE TABLE 3 OF E2/AS1 - VERTICAL CORRUGATE SUITABLE FOR DIRECT FIX WITH RISK SCORE OF 20.